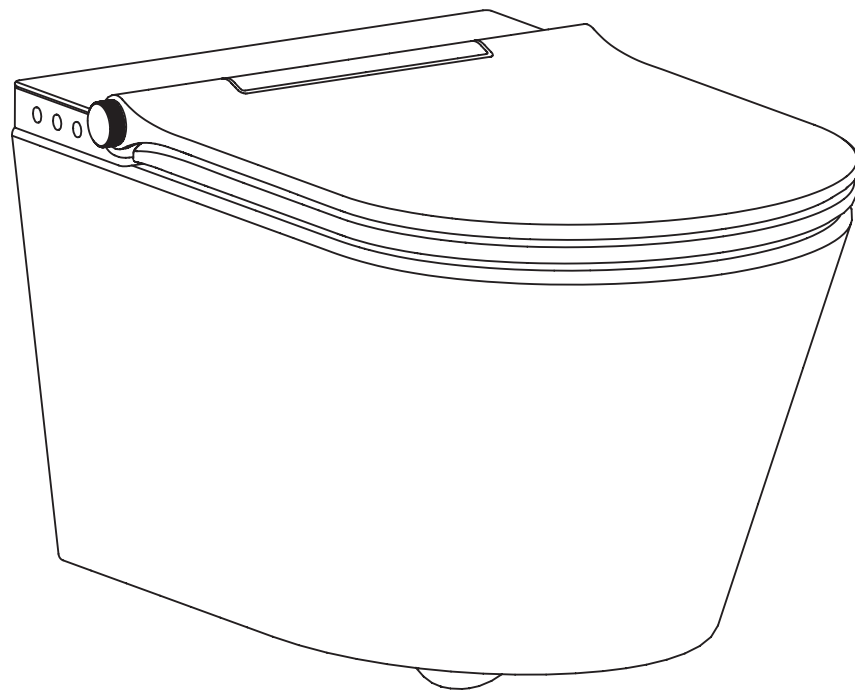
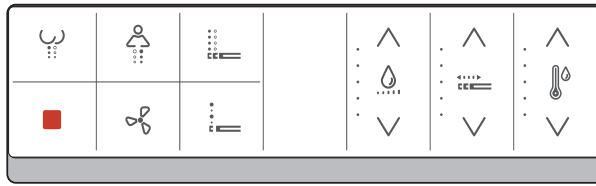


OLTENS



Smart Frisk - installation manual

Important information

Installation instructions

The installation manual provides instructions for the proper installation of the smart toilet. Before installation, it is essential to thoroughly familiarize yourself with the instructions.

Icons and their meaning



Danger Indicates the risk of serious injury or even death.



Attention Handling practices that do not pose a risk of injury.

Please read the instructions in this section

Intended recipients of the instructions and installer qualifications

This smart toilet with plumbing fixtures should only be installed by qualified plumbers. Electrical installations should only be performed by qualified electricians.

Safety instructions



Note Damage to the device and/or loss of operational properties

* National/regional standards and local regulations regarding installation must be followed.



Note Damage to the device caused by freezing water

* It is prohibited to install intelligent toilets in rooms where there is a risk of freezing water. The temperature inside the room must not fall below 4°C.



Note Damage to the device caused by condensation

* After moving the intelligent toilet from a low-temperature environment to a high-temperature room, power must be disconnected for several hours initially.

Disassembly of individual components is prohibited



Danger Risk of fatal electric shock!

* If the power cord is damaged, only the manufacturer's technical staff or a qualified electrician can replace it.

* The device must be properly grounded.

* The permanent electrical installation must be equipped with an anti-electric shock device that completely disconnects by contact separation under category III surge conditions, in accordance with electrical installation standards.

* The cross-sectional area of the wires in the permanent electrical installation should be between 1 and 2.5 mm².

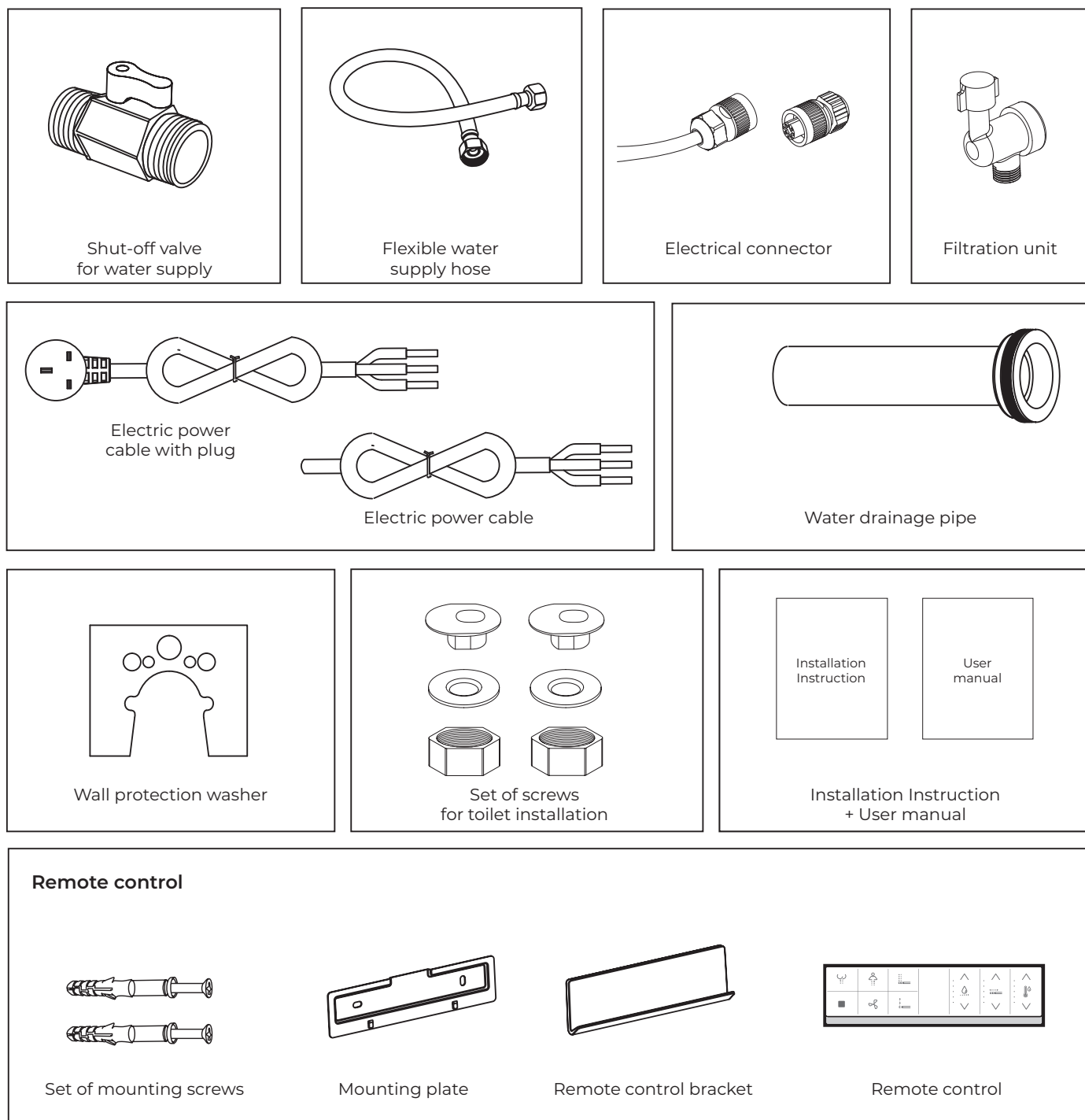
* Ensure that the grounding wire of the power cable is 10 mm longer than the live (L) and neutral (N) wires.



Note

* The unit of length used in the installation instructions is millimeters (mm).

List of parts

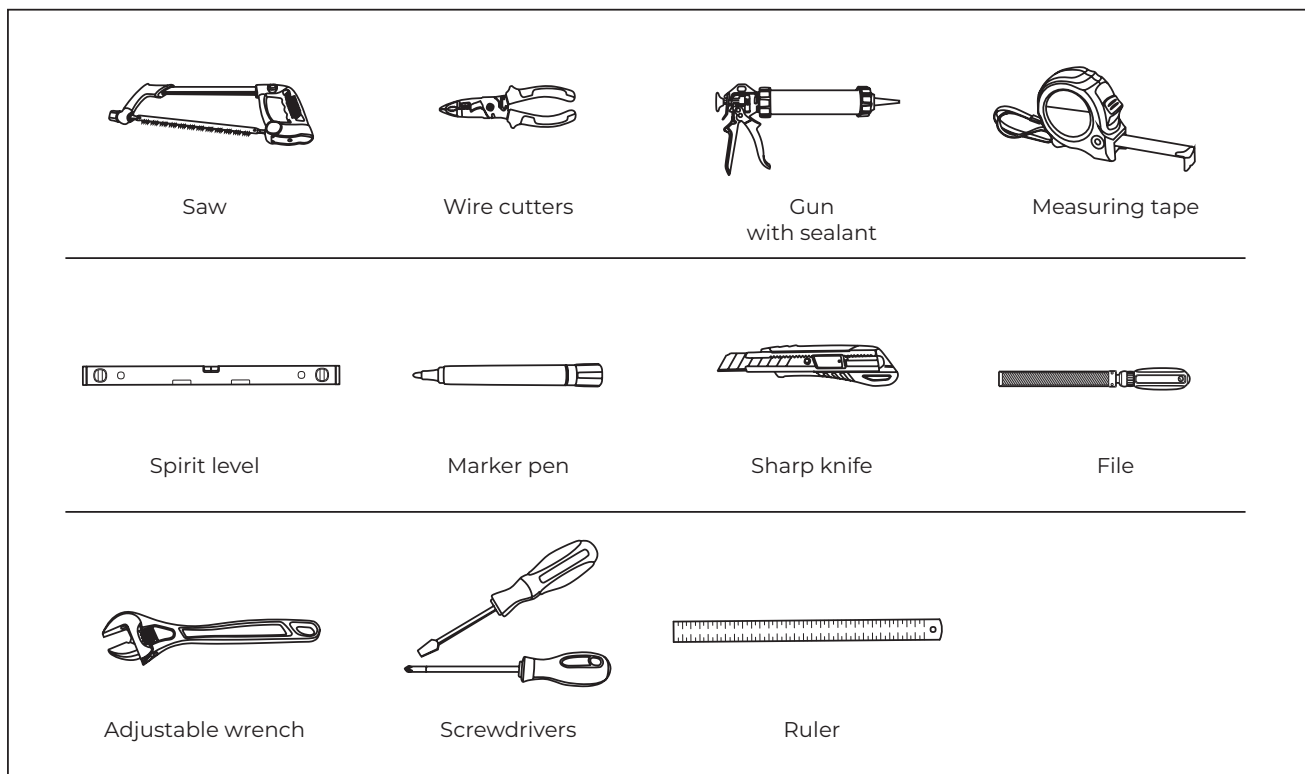


Note

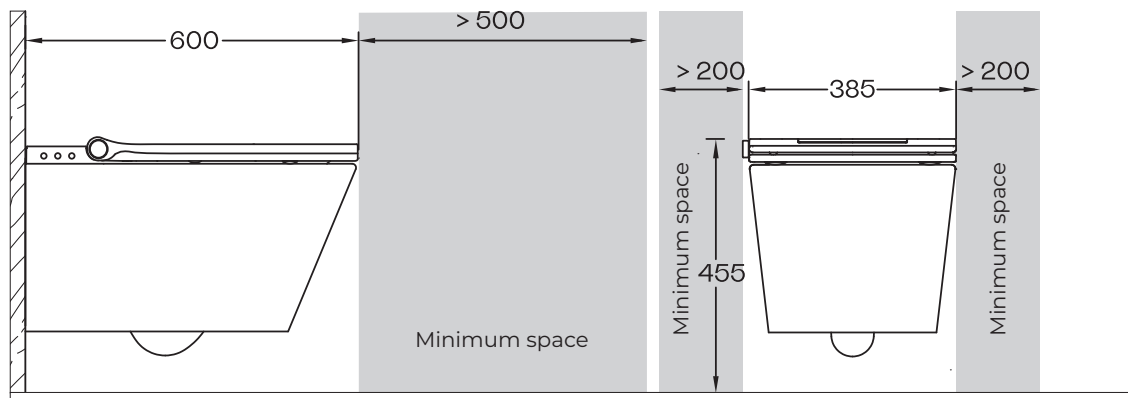
Installation of the remote control

* The remote control can only be installed after the toilet has been mounted

Installation tools (not included)



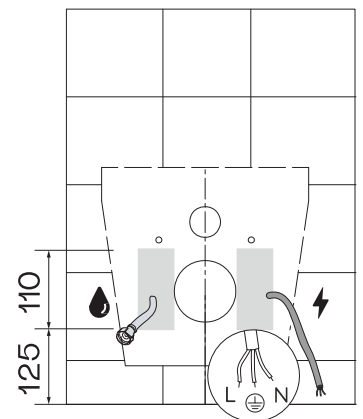
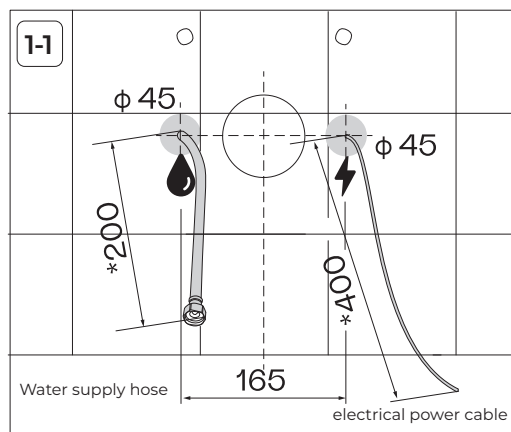
Technical drawing



Installation option no. 1

To be checked before installation

1. The installation site of the toilet should be equipped with a water supply hose.
2. The installation site of the toilet should be equipped with an electrical power supply cable.
3. "*" Recommended dimension

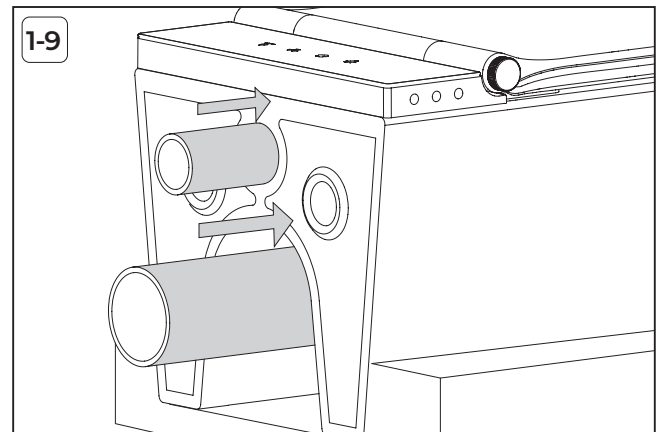
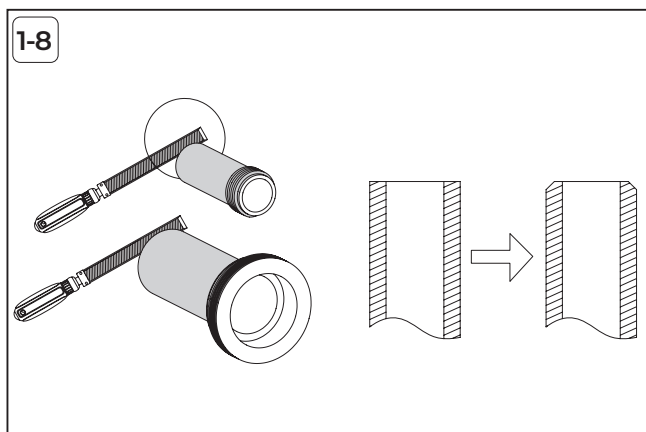
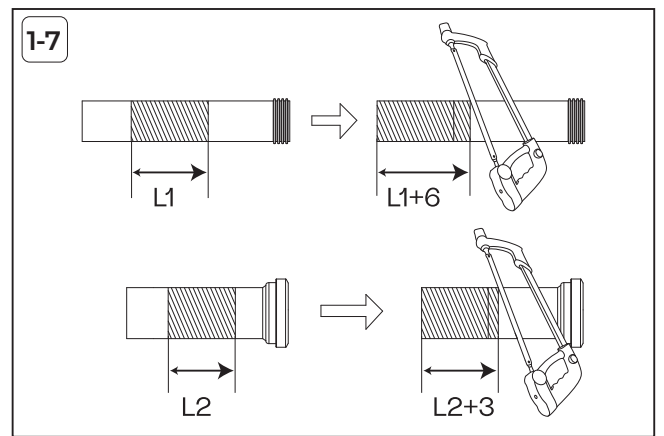
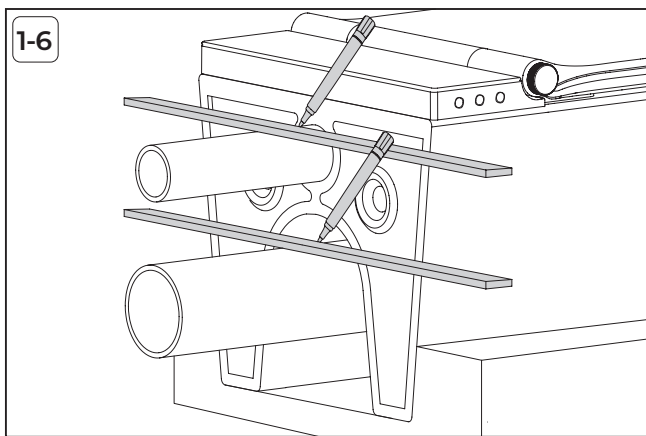
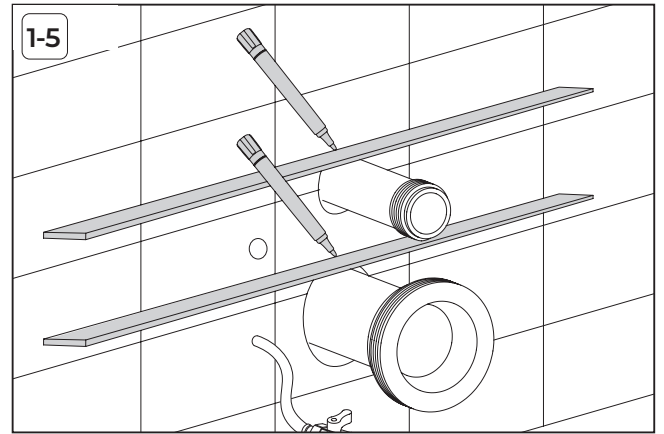
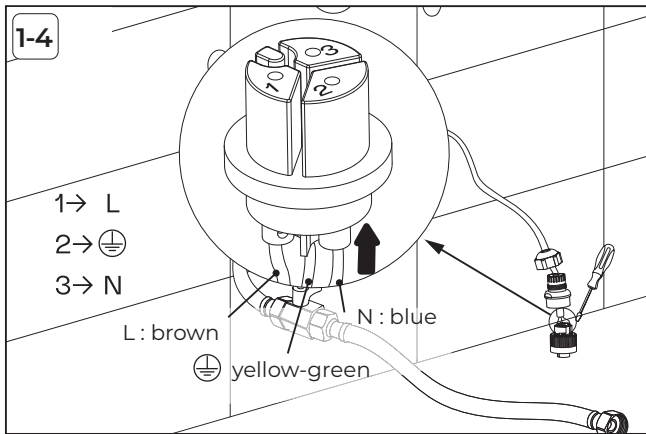
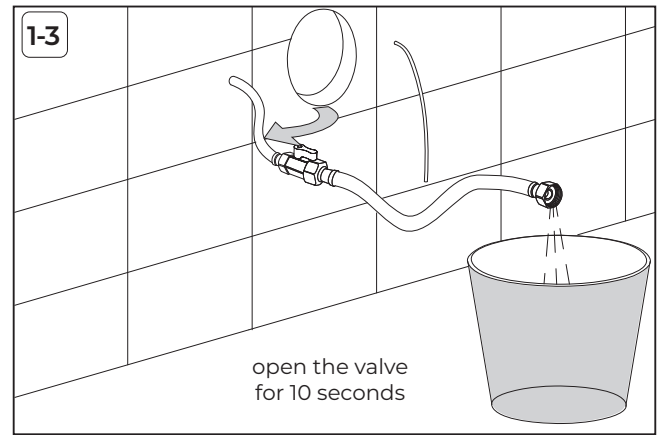
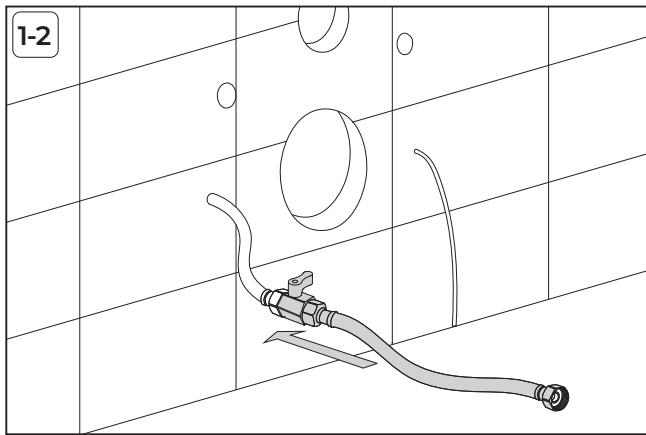


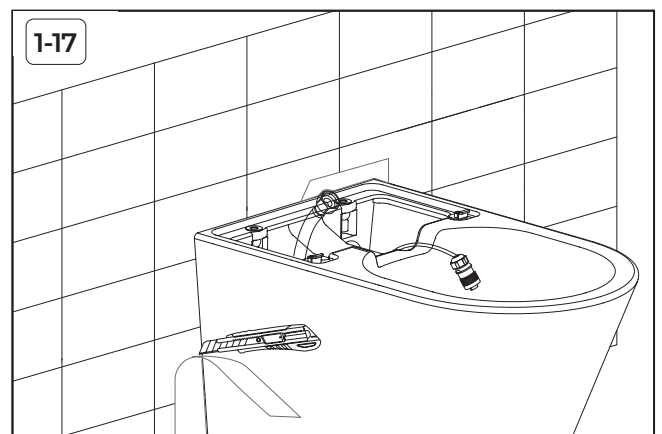
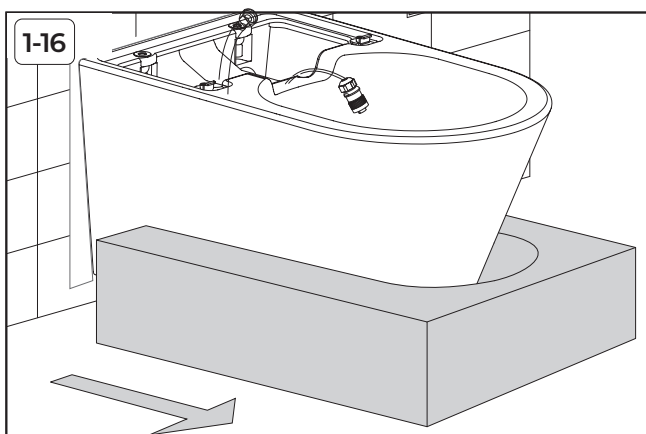
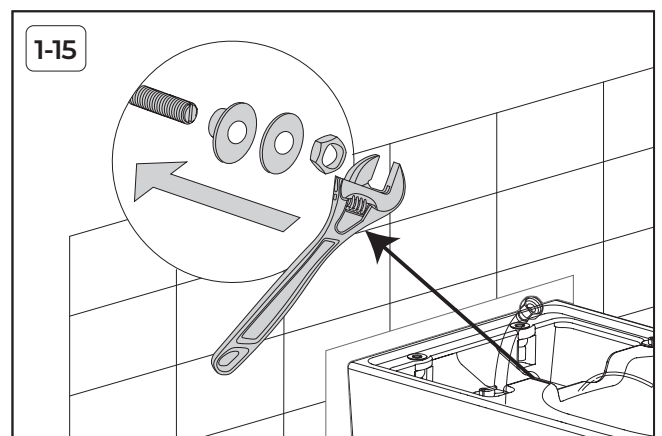
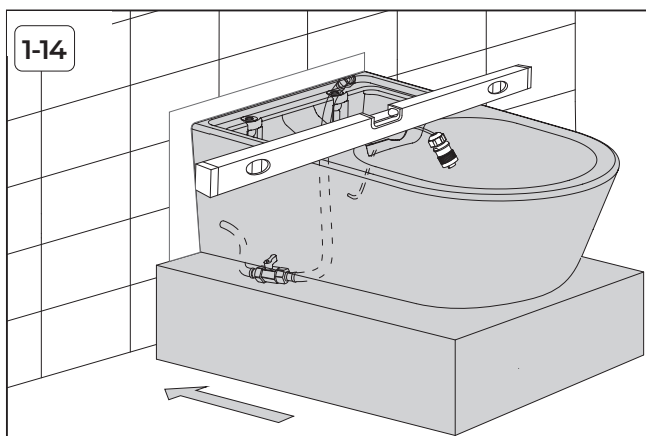
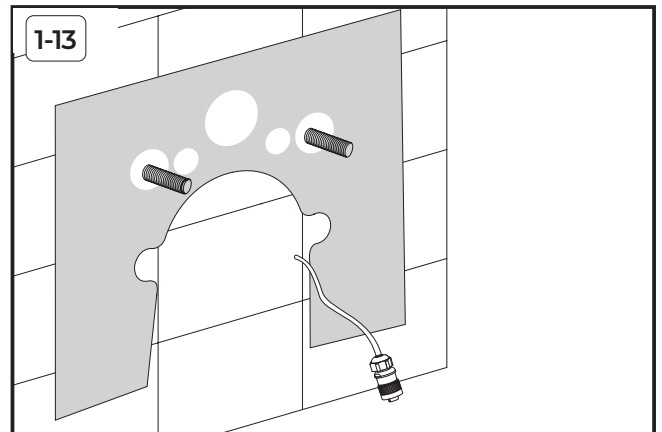
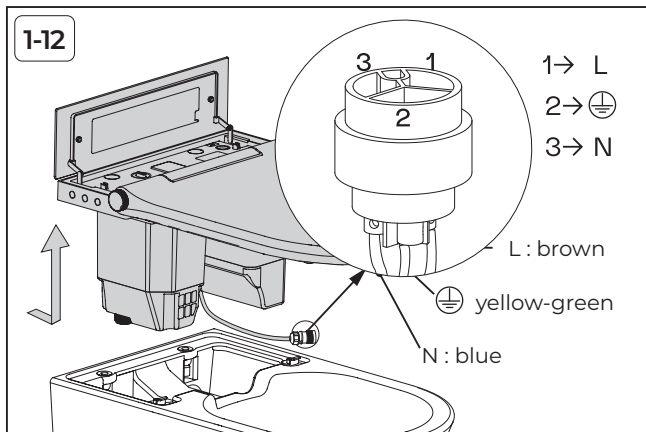
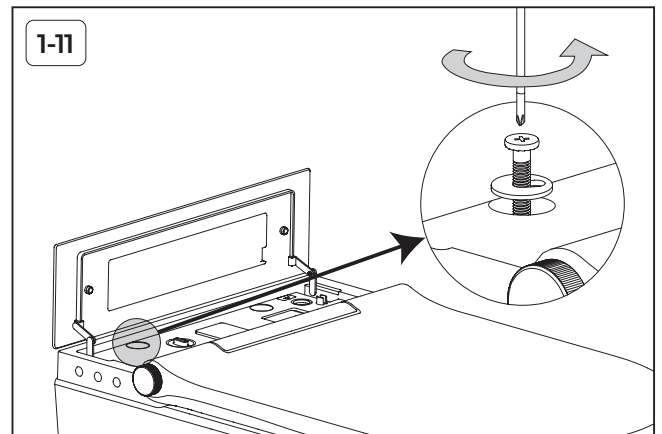
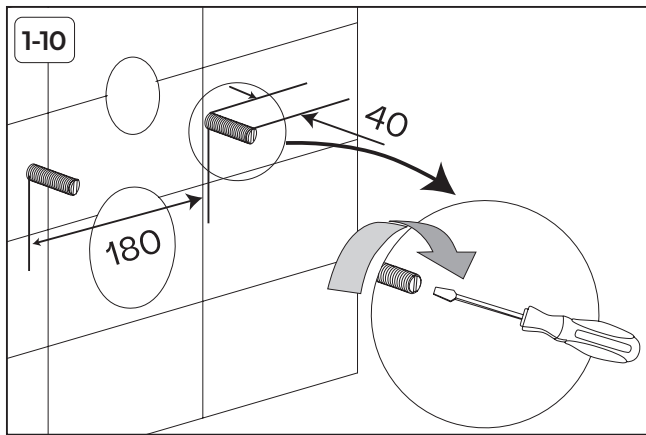
To provide additional protection, it is recommended to install a residual current device (RCD) in the power circuit, with a rated operating current not exceeding 30 mA.

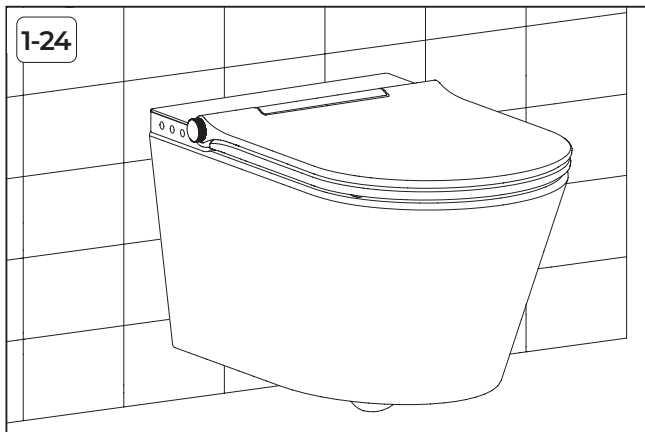
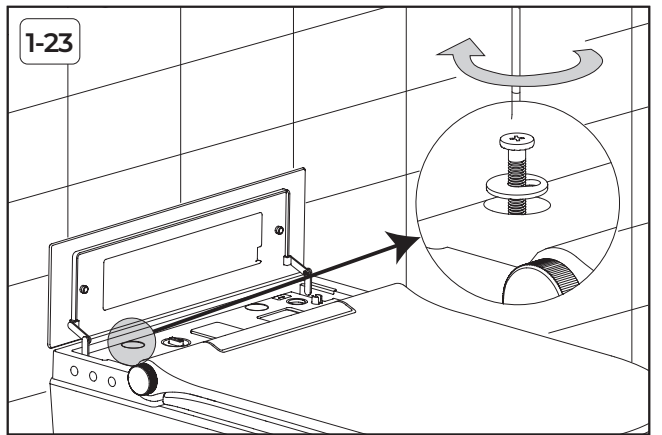
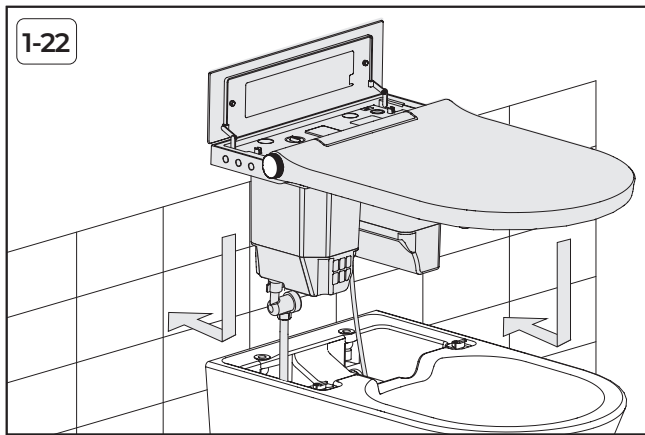
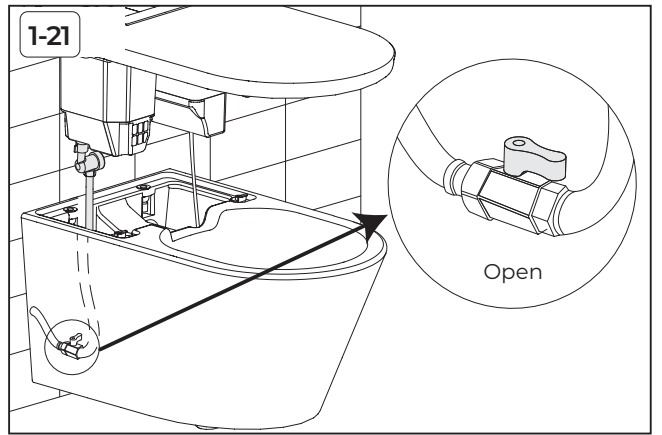
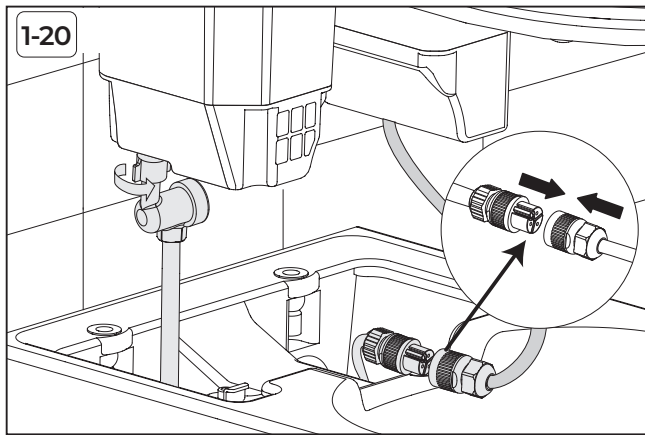
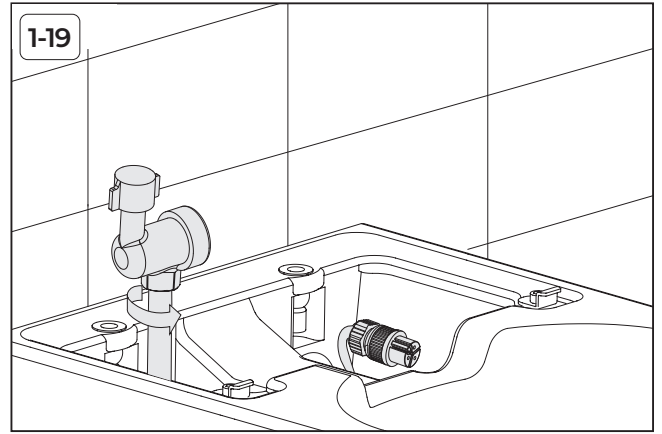
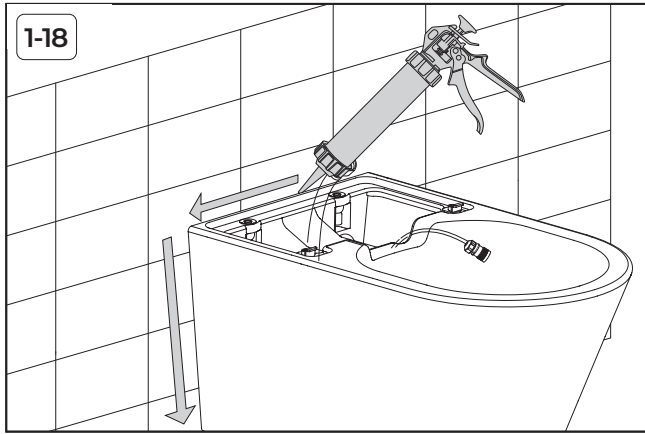


DANGER

This operation should be carried out by professionals.







Installation option no. 2

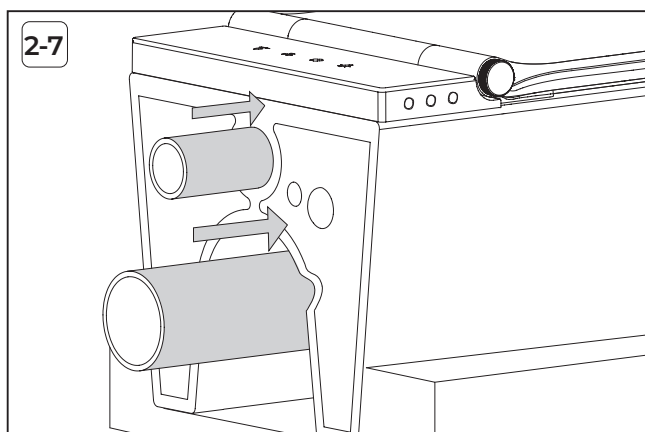
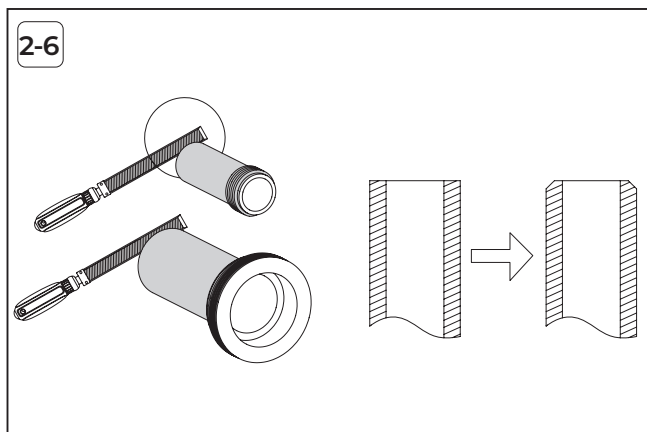
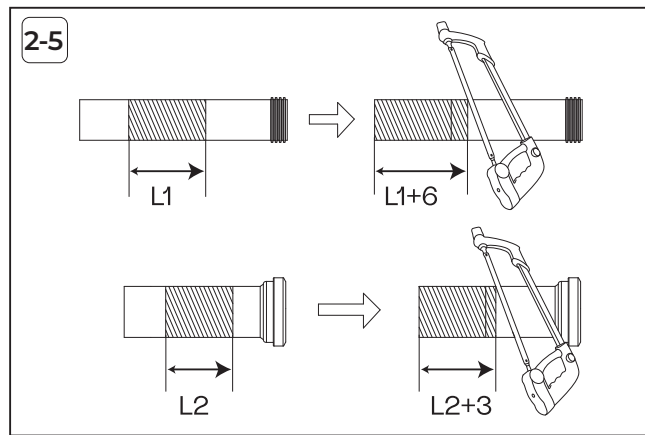
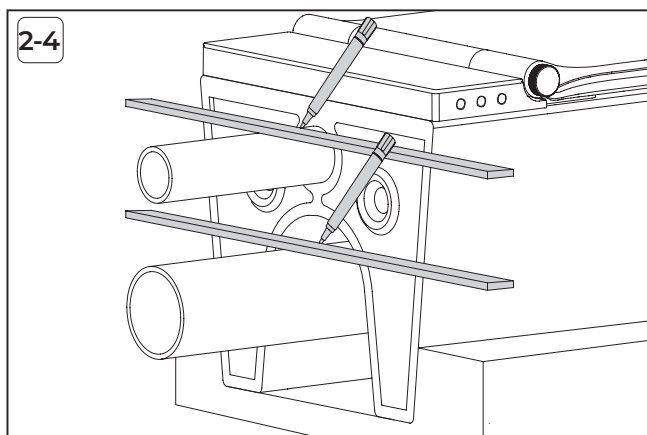
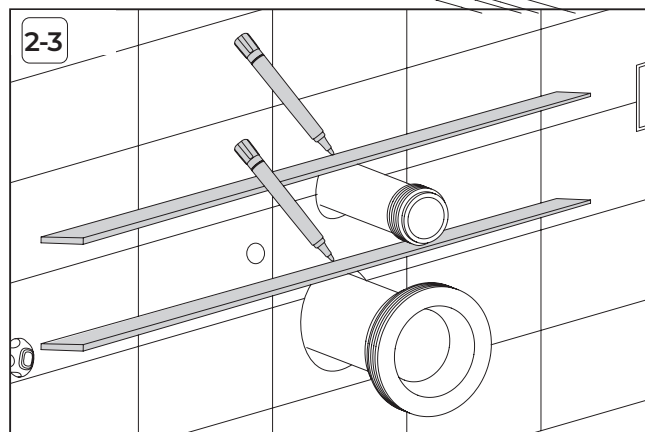
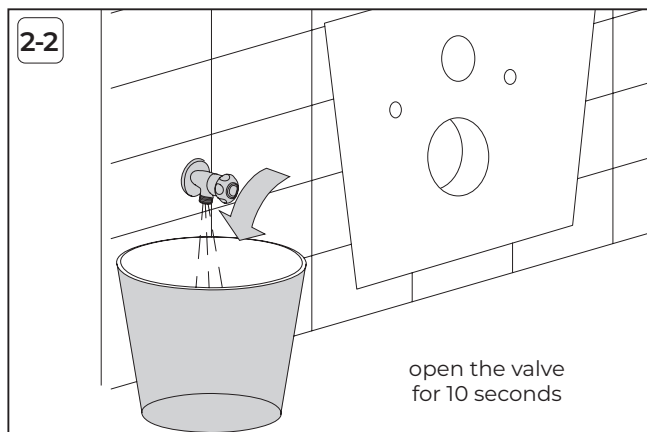
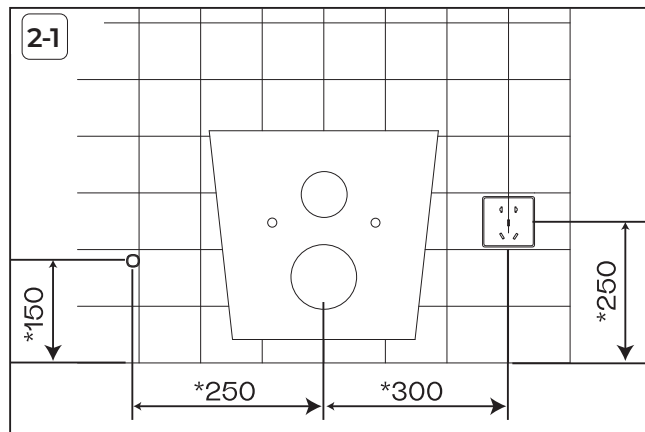
To be checked before installation

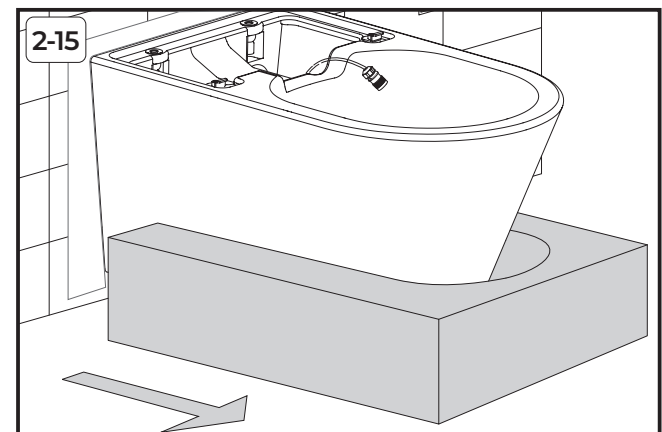
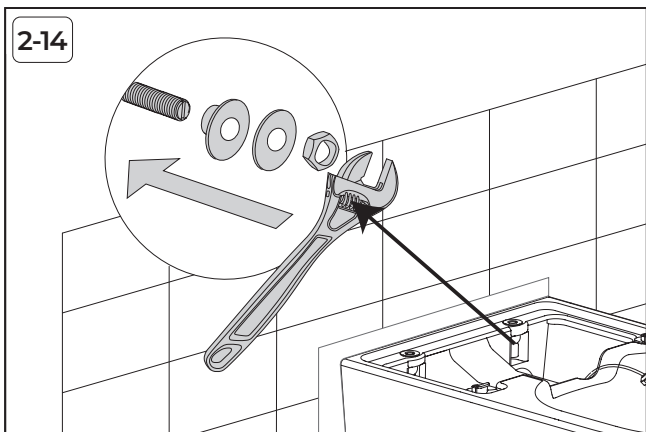
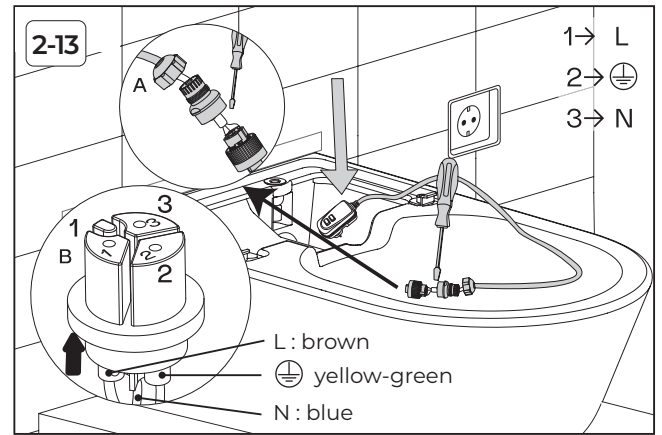
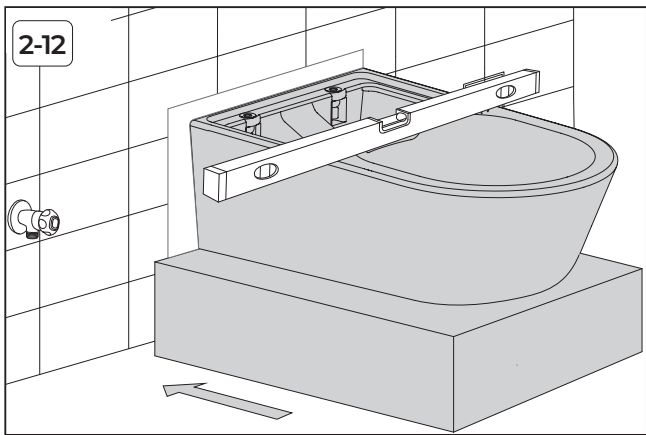
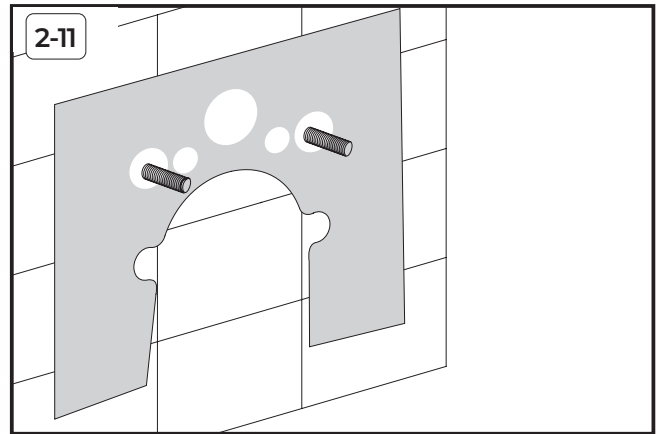
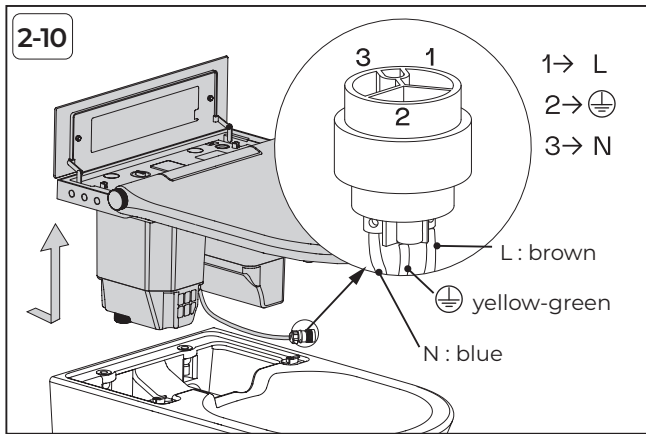
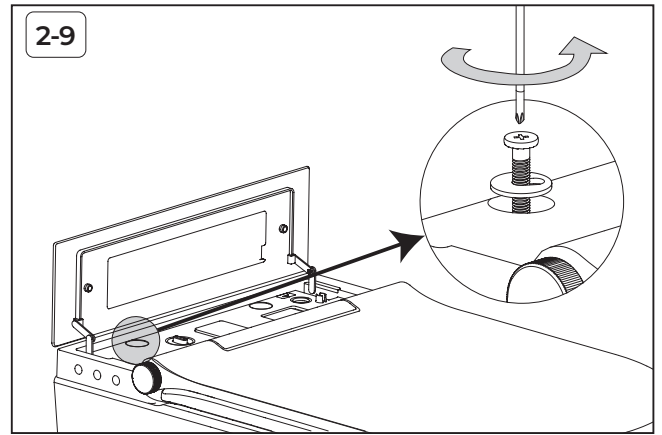
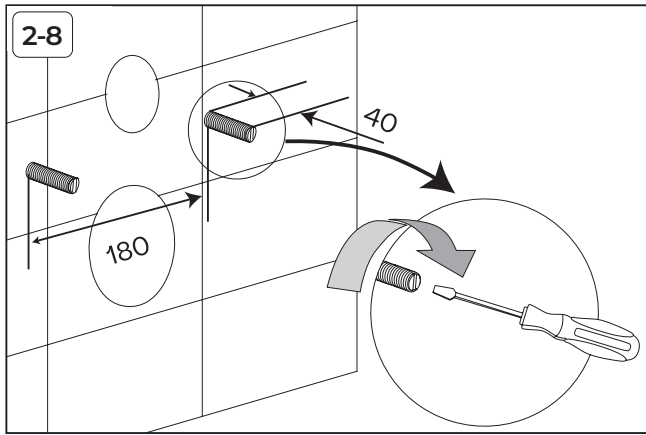
1. The installation site of the toilet should be equipped with a shut-off valve for the water supply.
2. The installation site of the toilet should be equipped with an electrical power socket.
3. "*" Recommended dimension

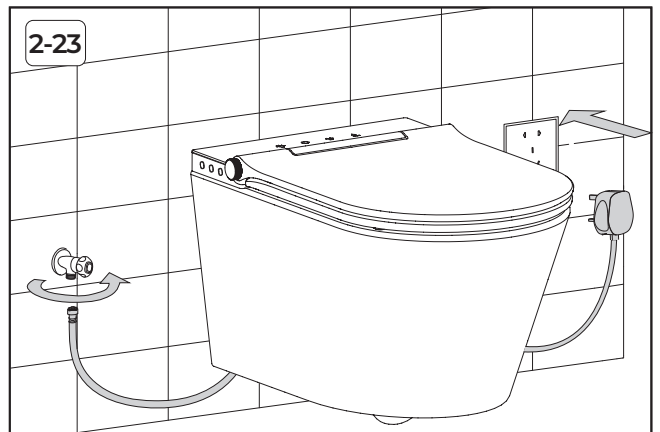
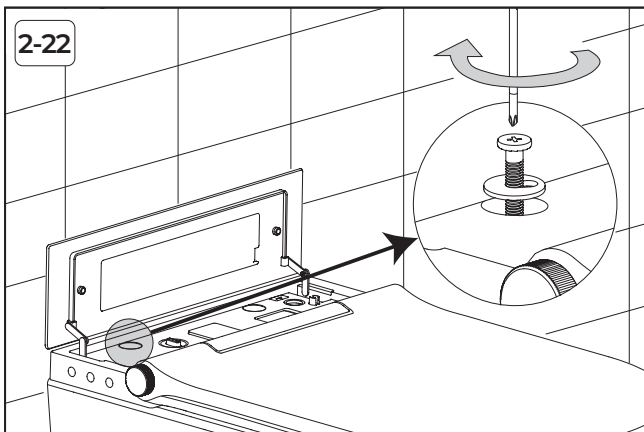
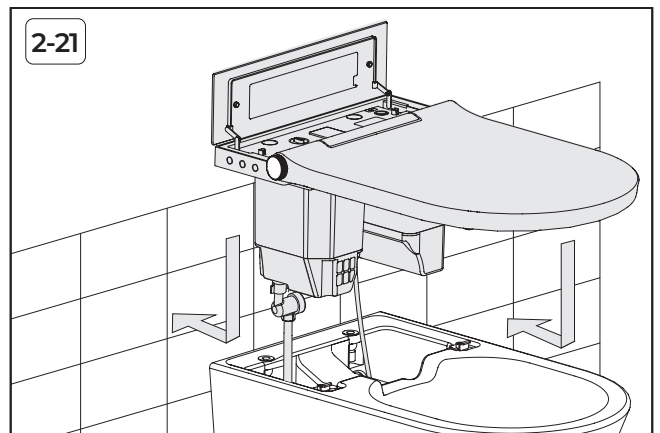
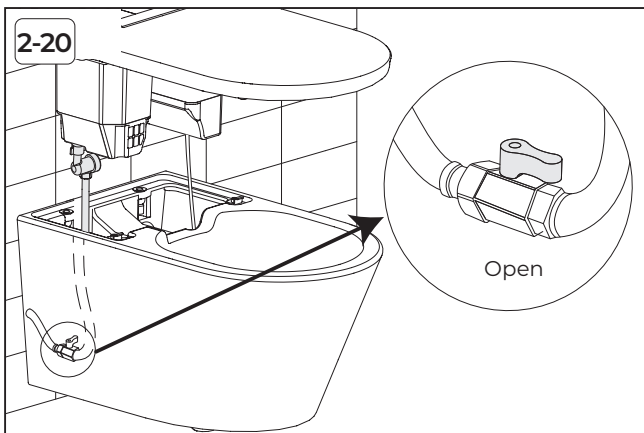
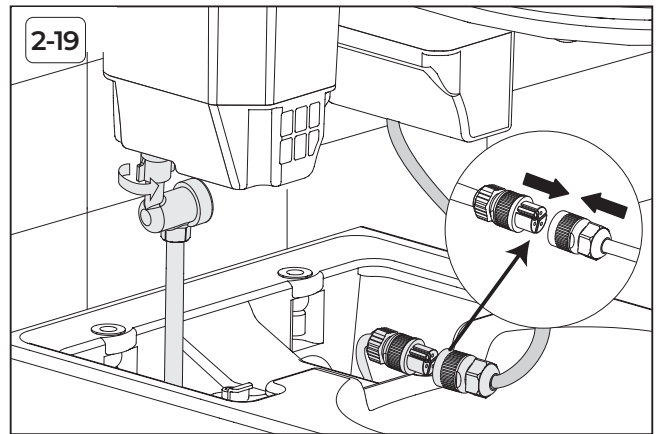
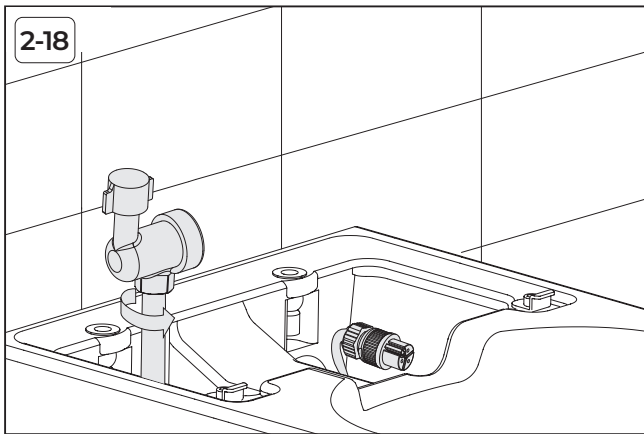
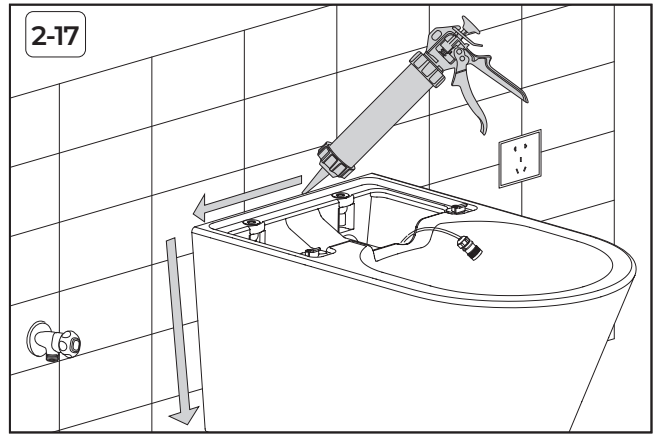
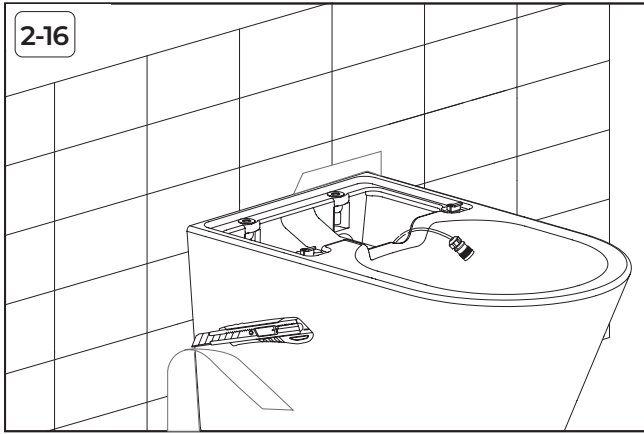


DANGER

This operation should be carried out by professionals.







Installation of the remote control

※ Recommended dimension

