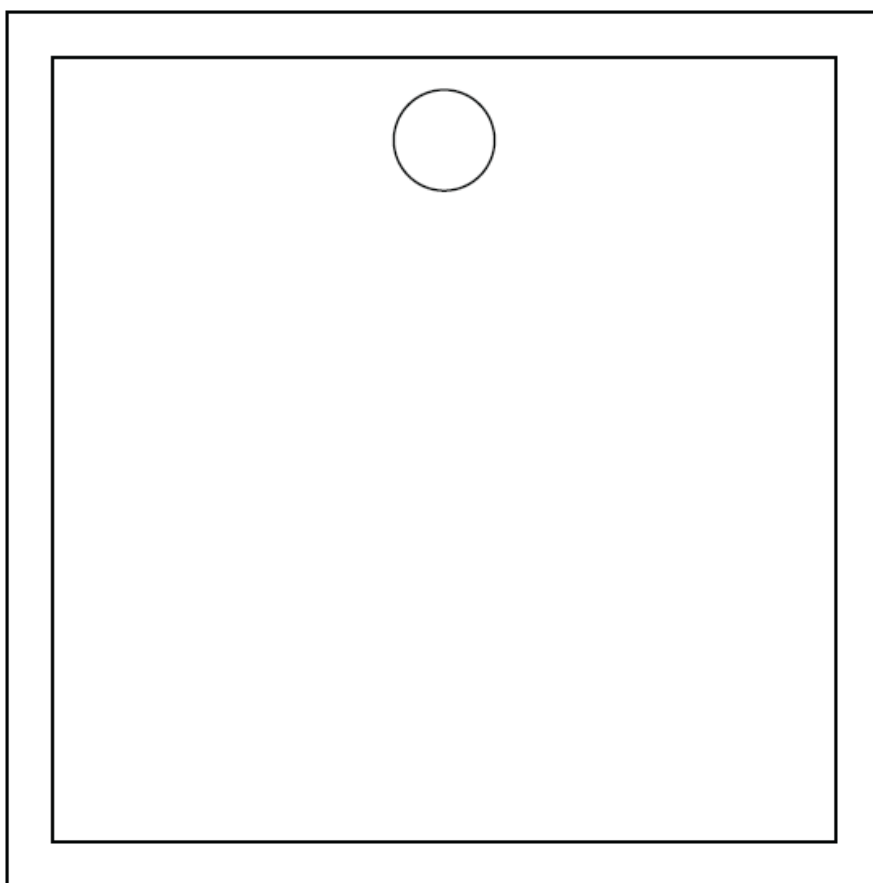
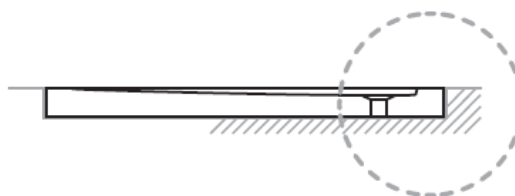


OLTENS

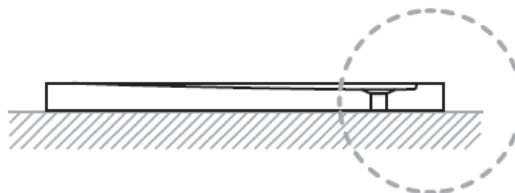


Bergytan

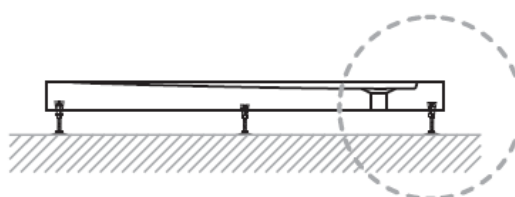
A pag. 2



B pag. 4

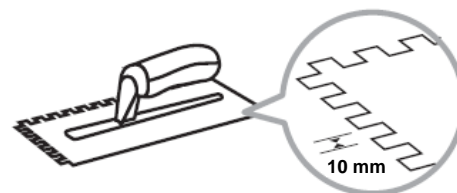


C pag. 7



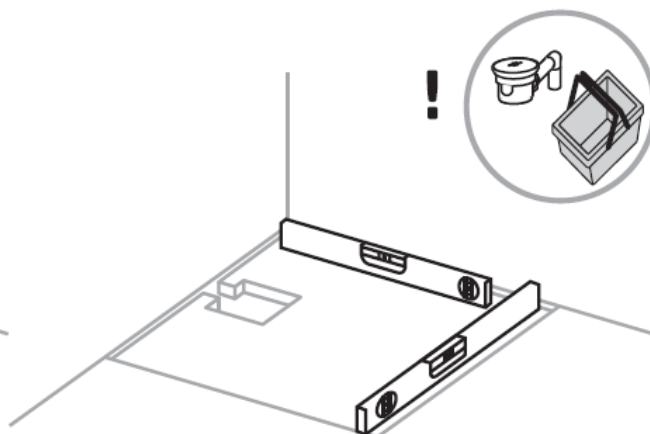
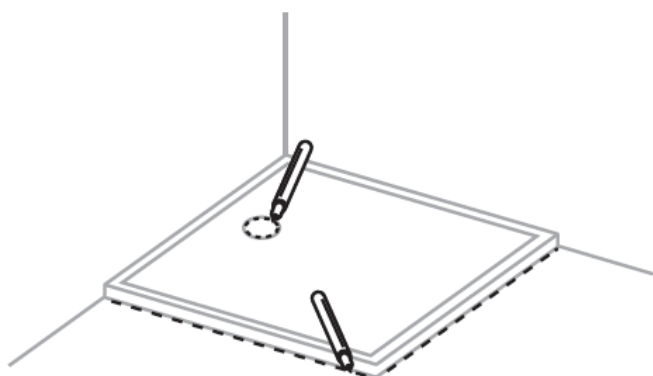
A

2. Pregătește

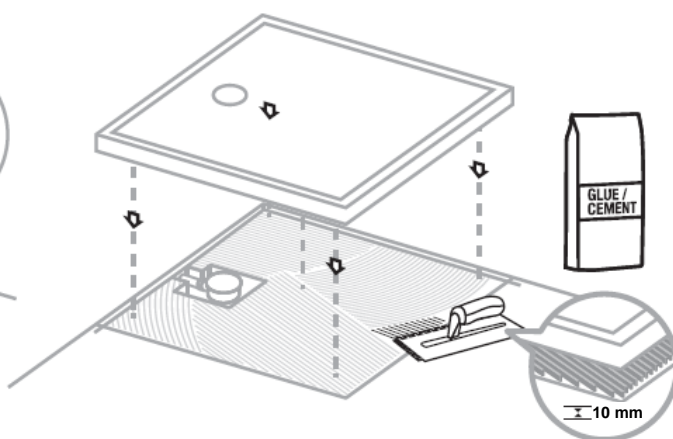
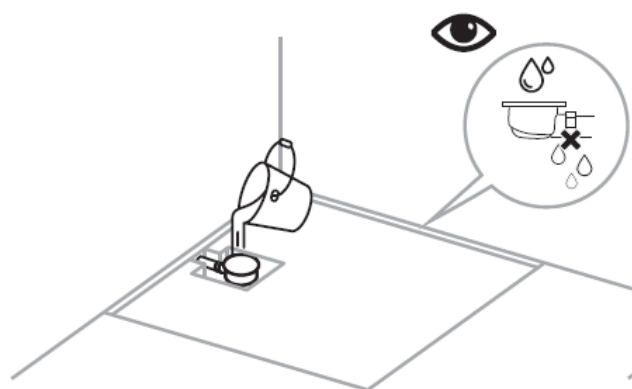


! - produsul nu constituie element al setului

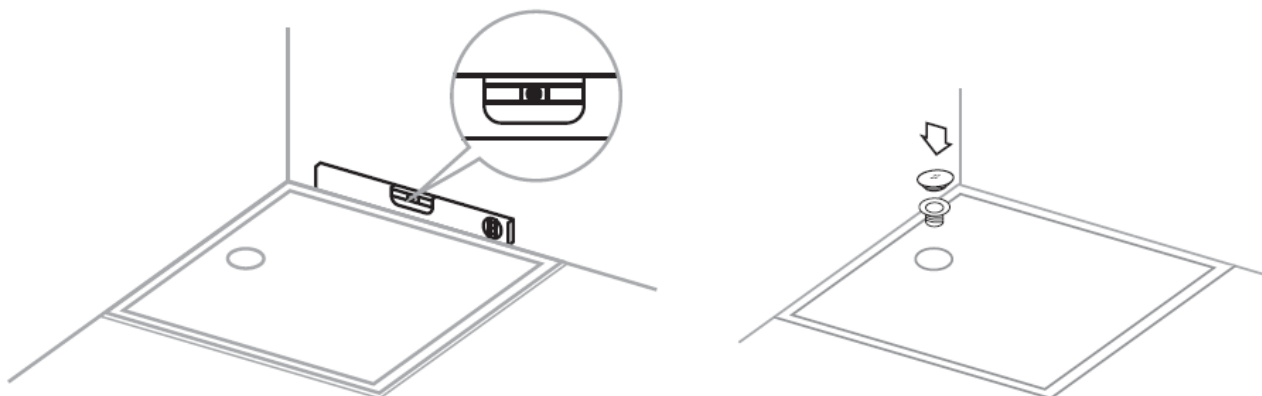
A



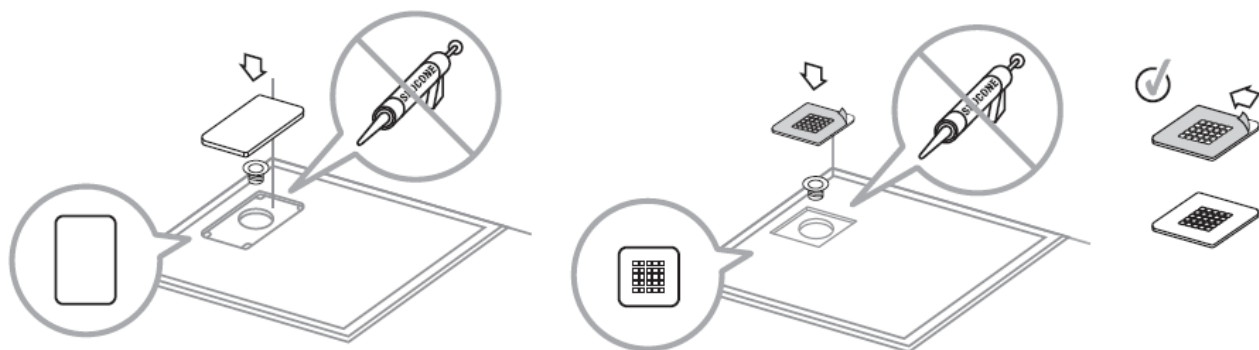
A



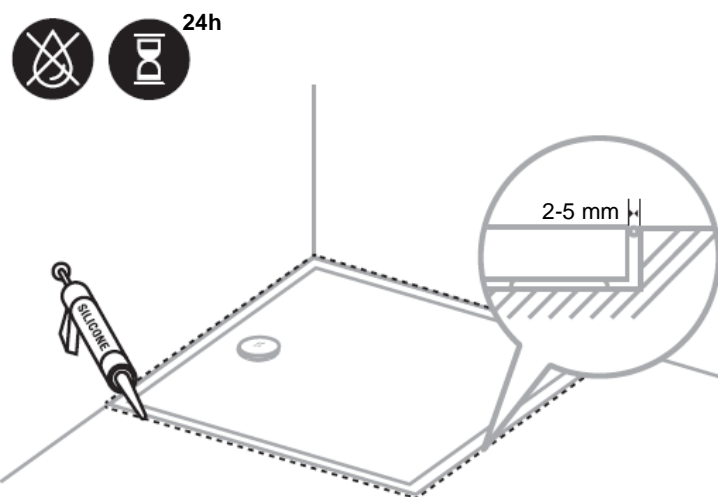
A



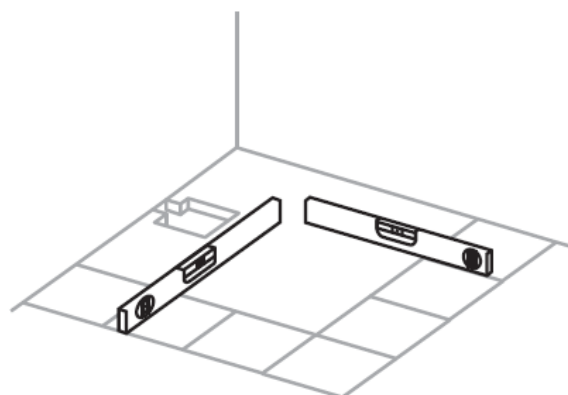
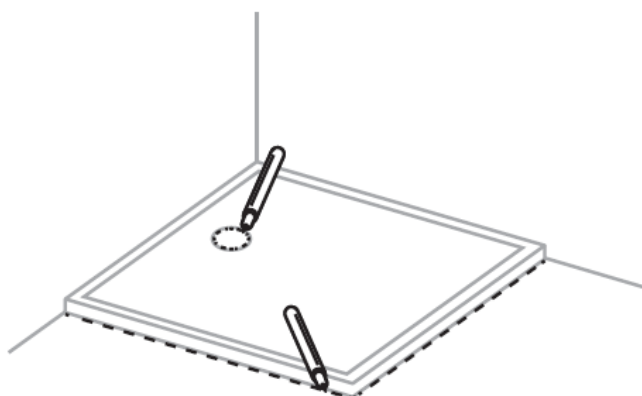
A



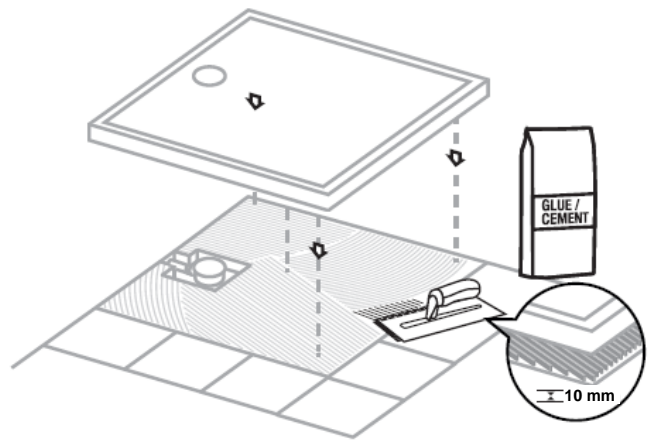
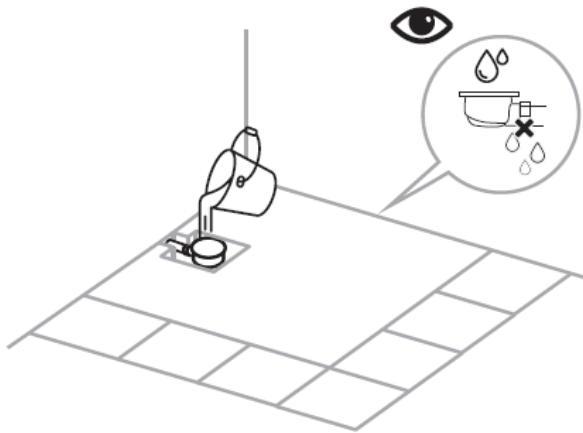
A



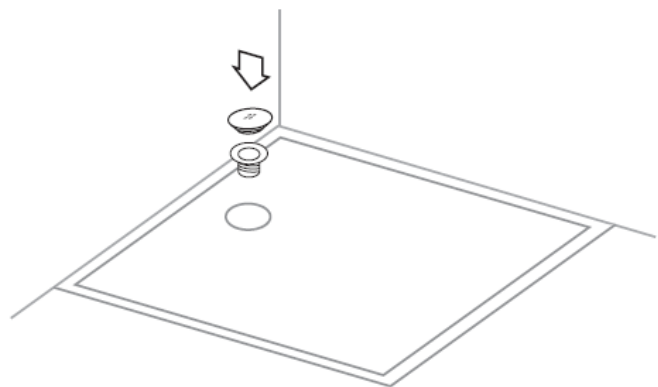
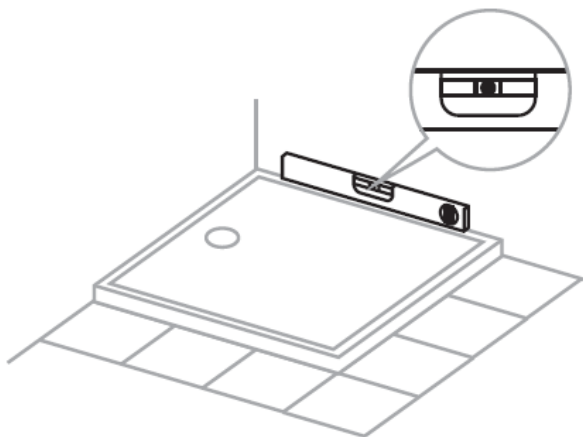
B



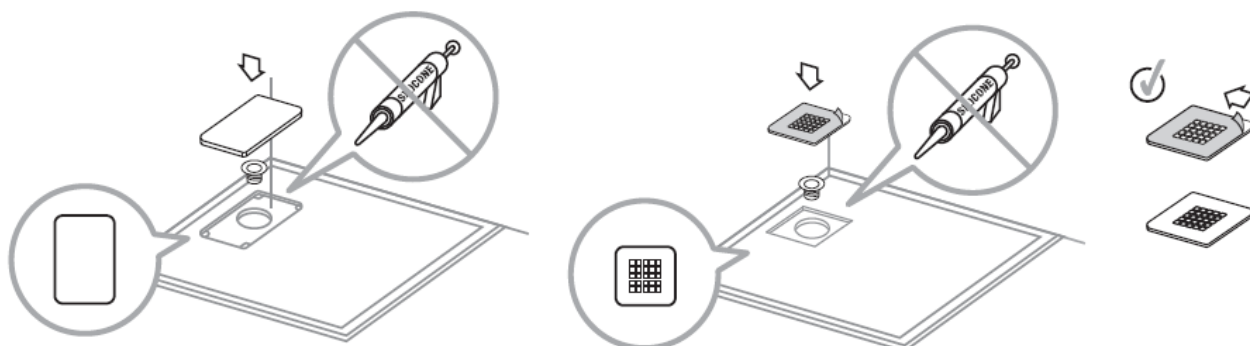
B



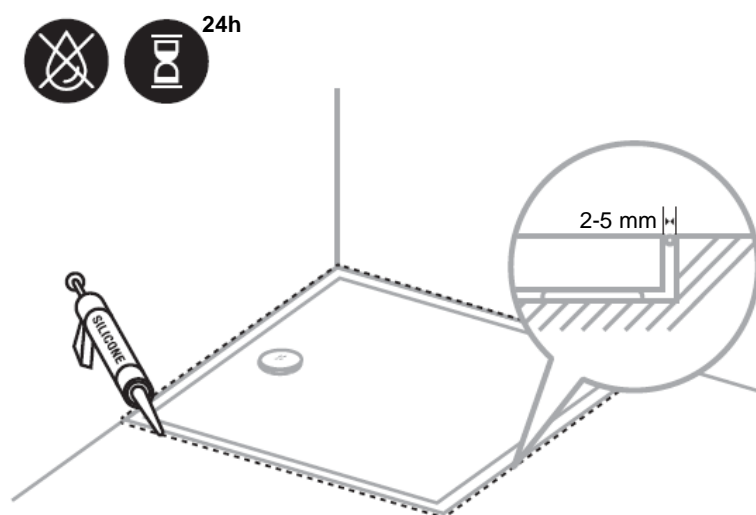
B

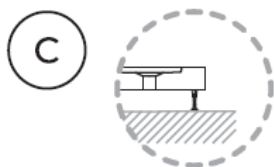


B



B





Indicații pentru montajul cădiței cu picioare în conformitate cu instrucțiunile de mai jos.

1/ Înainte de lipirea picioarelor, trebuie identificate pozițiile pentru lipirea picioarelor pe cădiță în conformitate cu instrucțiunile de mai jos.

2/ Înaintea începerii montajului, trebuie curățată suprafața cădiței, cu ajutorul șervețelor incluse în set, în zonele de lipire a picioarelor precum și suprafața de lipire de pe picioare. Abia după curățare se poate începe lipirea benzii 3M VHB pe picioare.

3/ Picioarele trebuie montate central pe proeminențele vizibile pe spatele cădiței. În cazul anumitor modele, suprafața proeminenței de pe cădiță poate fi mai mică decât suprafața de lipire de pe picior. Acest lucru nu influențează durabilitatea prinderii.

4/ Lipirea trebuie realizată în condiții de curățenie și lipsă de umiditate. Dacă după curățarea suprafeței de lipire are loc prăfuirea și murdărirea acesteia, atunci va trebui curățată din nou. Doar o suprafață pregătită corespunzător asigură durabilitatea prinderii.

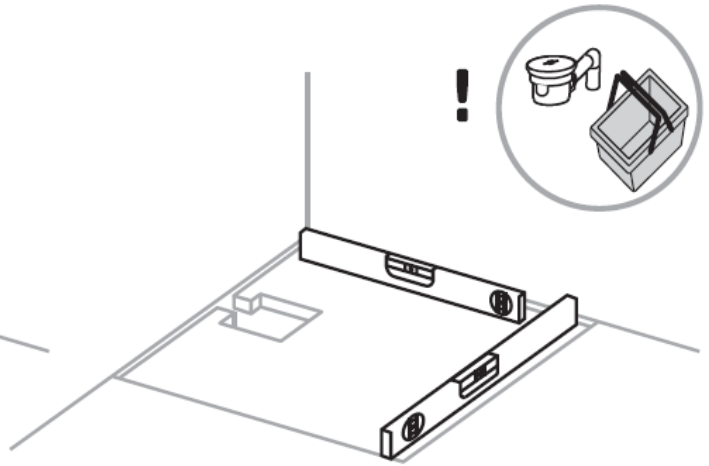
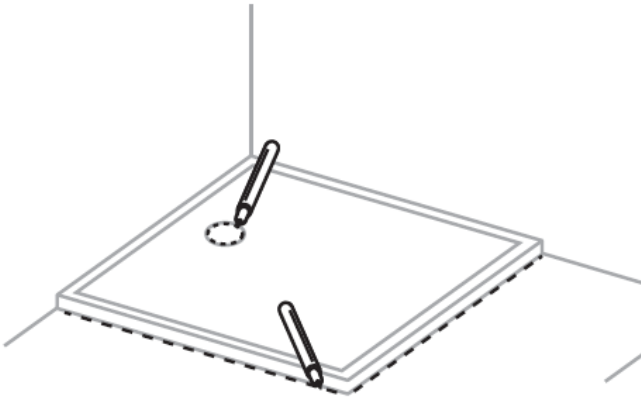
5/ După finalizarea procesului de lipire, cădița trebuie lăsată pe picioare, așteptând 30 de minute înainte de continuarea montajului.

6/ După lipirea picioarelor nu este permisă sprijinirea cădiței „pe o parte”, punând presiune pe picioare în orice alt mod, decât cel rezultat din montajul corect.

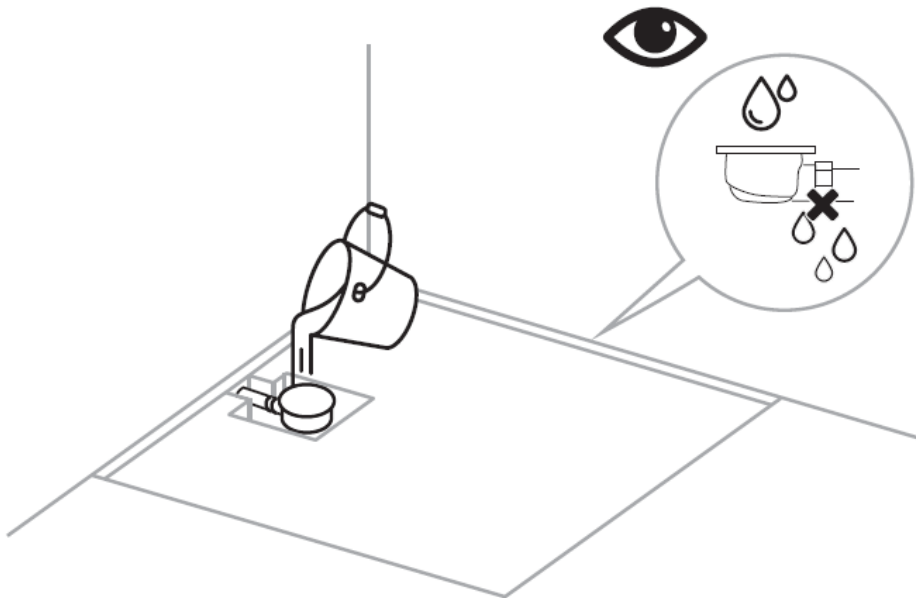
7/ După lipirea picioarelor nu este permisă mutarea cădiței pe distanțe mai lungi, fără a fi ridicat. Constituie o excepție împingerea acesteia la perete în timpul instalării.

8/ Prezentele instrucțiuni presupun montajul cădiței de duș pe setul de picioare dedicat pe o pardoseală stabilă (pe plăci, șapă de beton etc.). Din cauza numeroșilor factori ce pot influența funcționarea corectă a produsului, cum ar fi de ex. (variația materialelor, pardoselilor, condițiile de lucru diferite, etc.), persoana care instalează are întreaga responsabilitate pentru montajul produsului. Daunele și prejudiciile generate în timpul montajului și utilizării, rezultate din montajul produsului diferit față de cel prezentat în instrucțiuni, nu fac obiectul reclamațiilor.

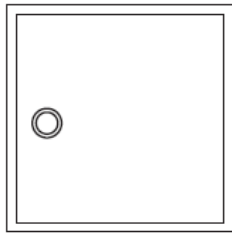
C



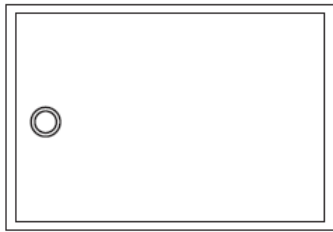
C



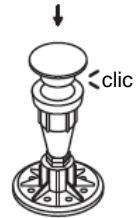
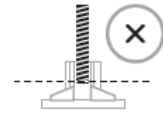
C



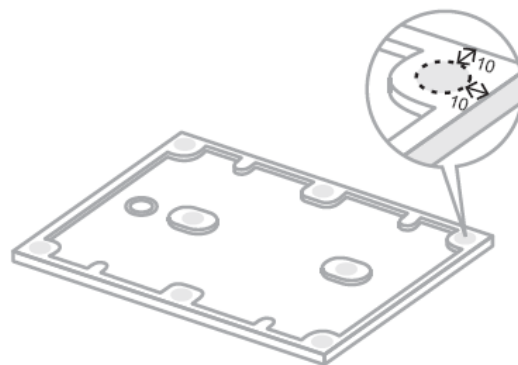
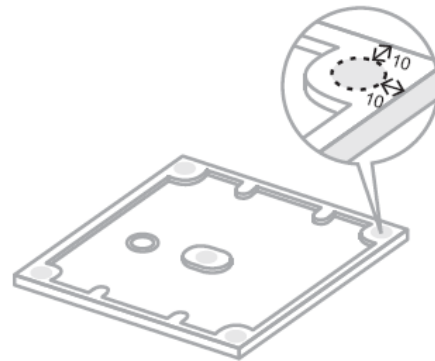
<1000 mm



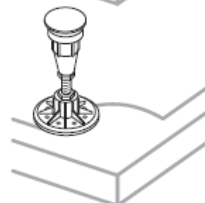
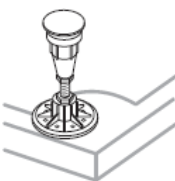
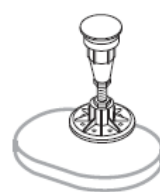
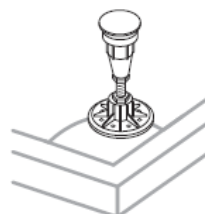
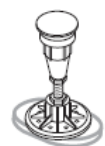
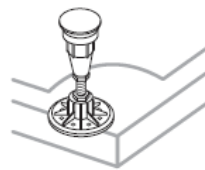
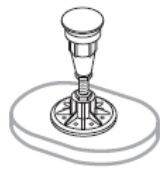
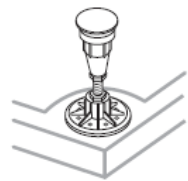
>1000 mm



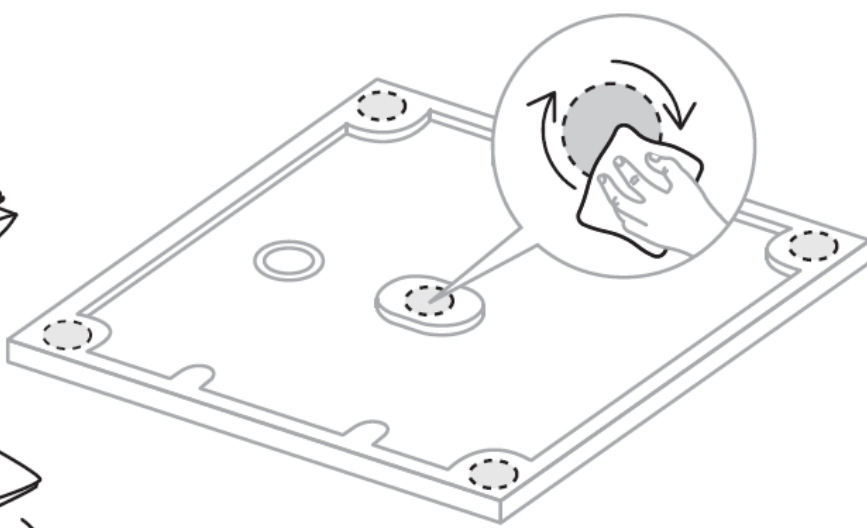
C



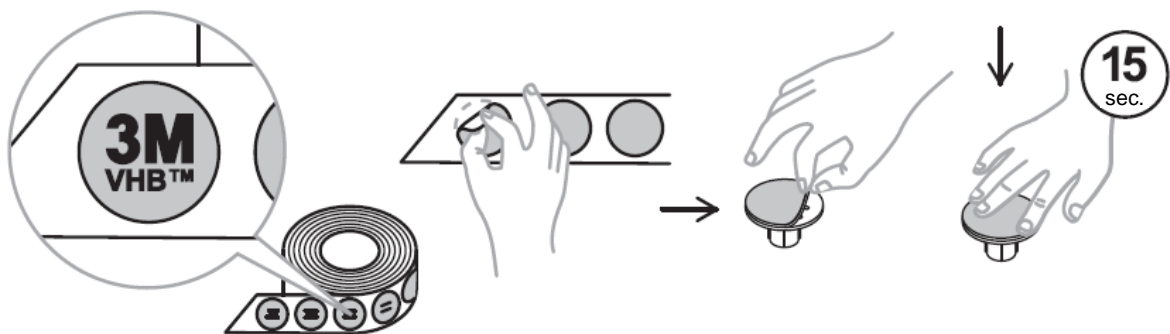
C



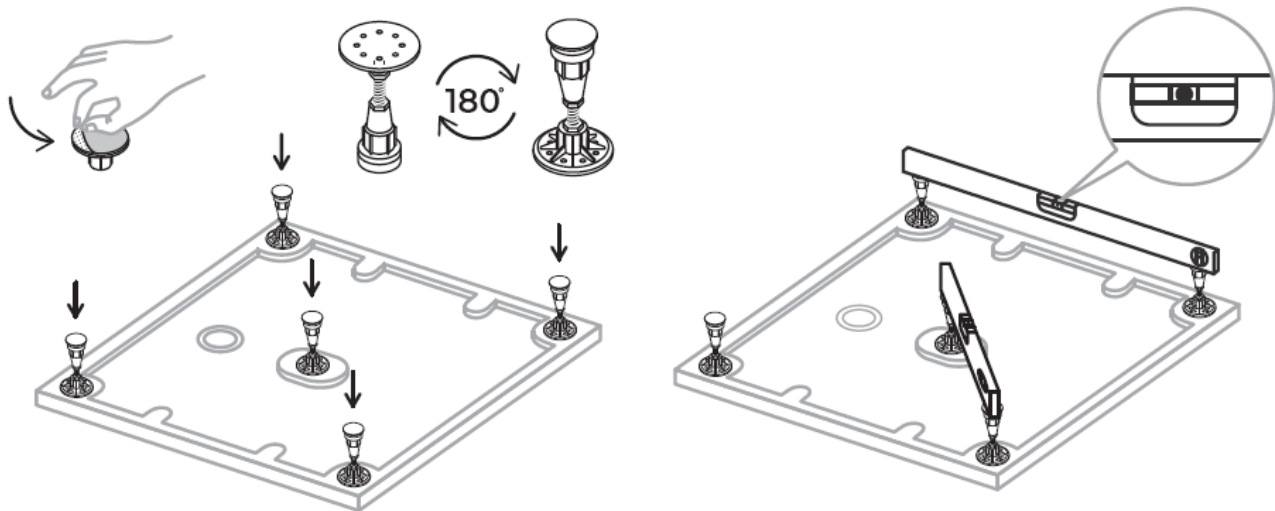
C



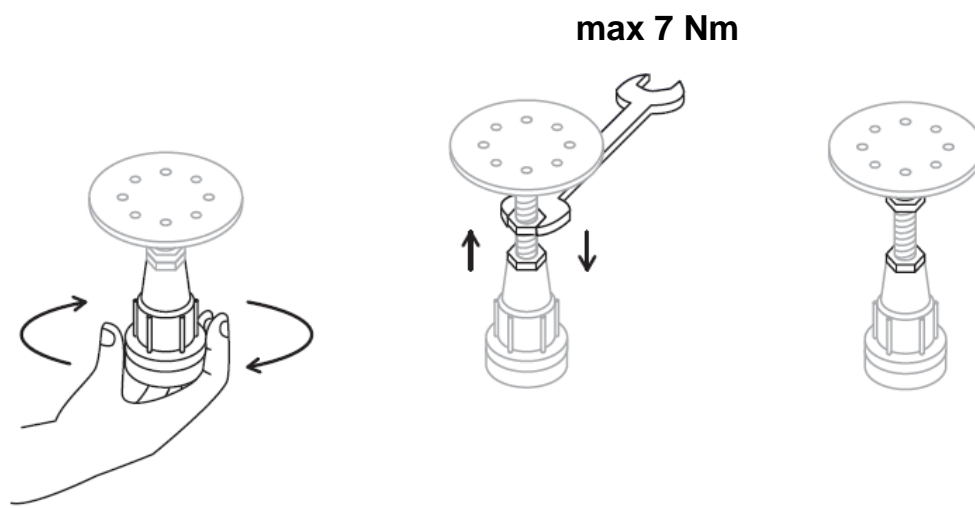
C



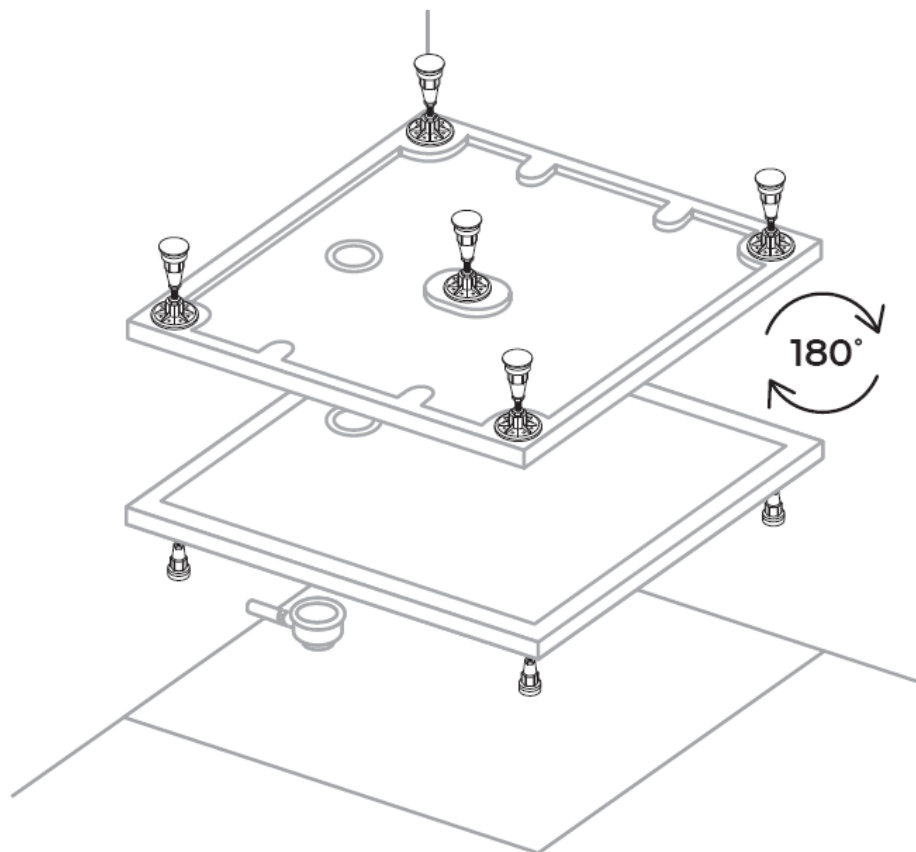
C



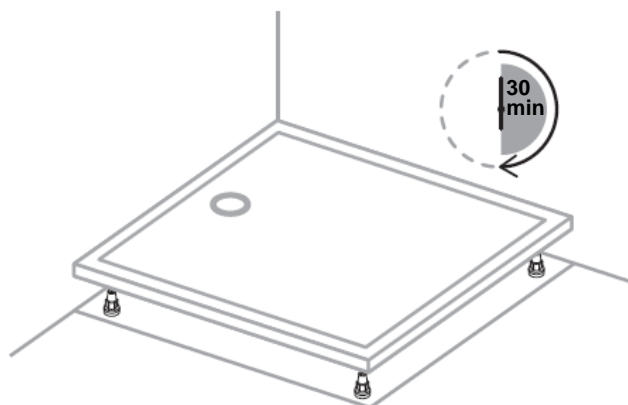
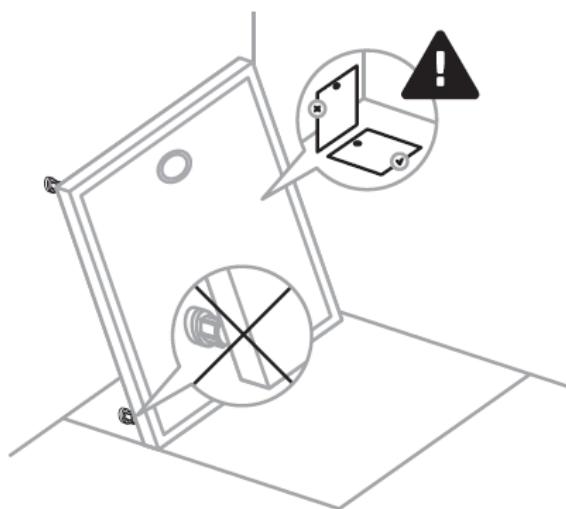
C



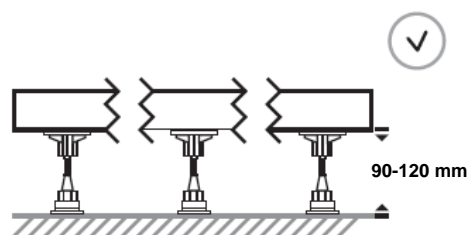
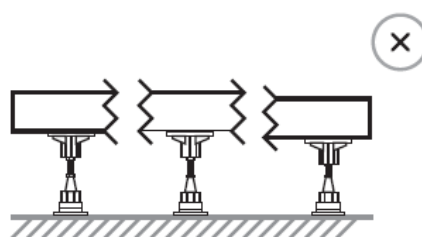
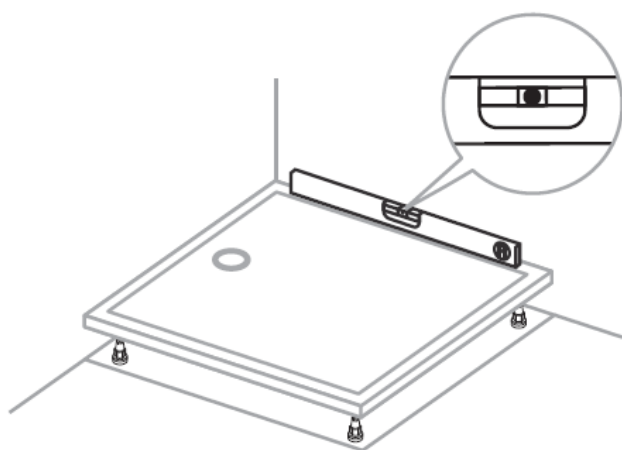
C



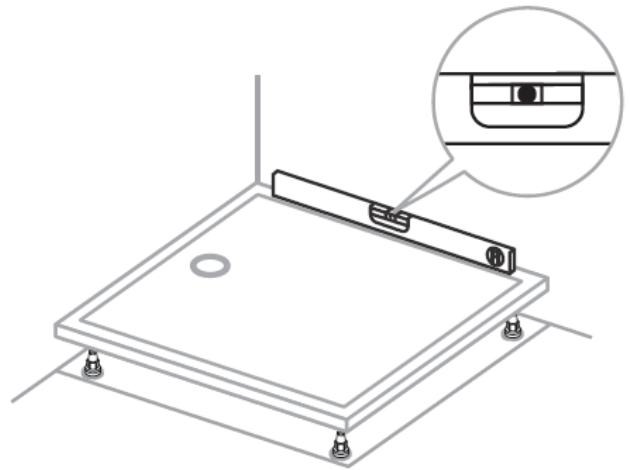
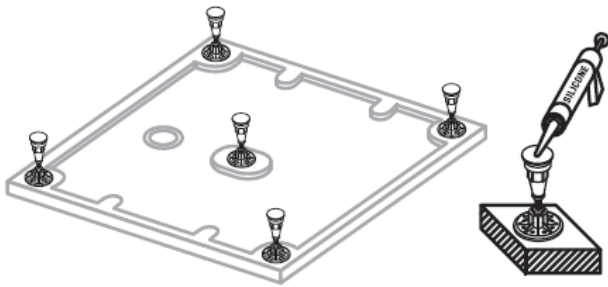
C



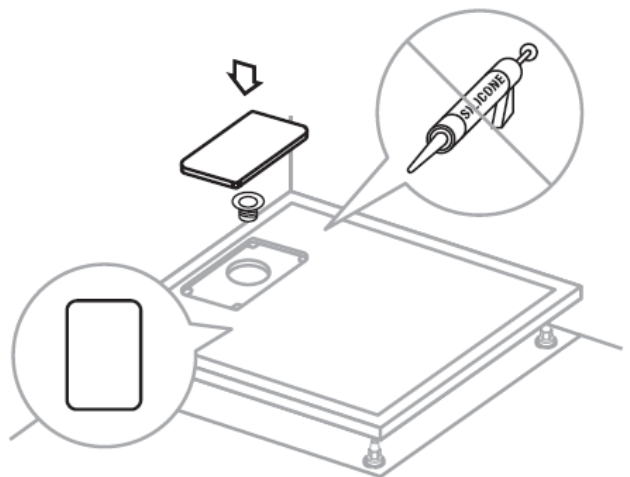
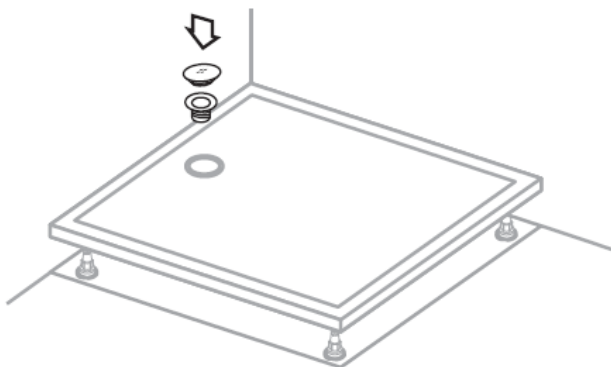
C



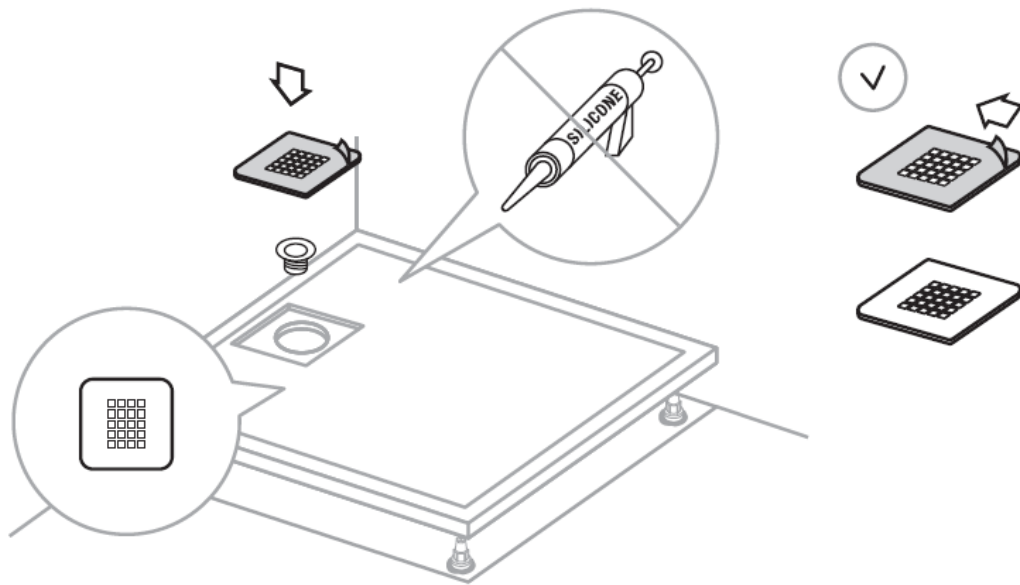
C



C



C



C



24h

